



Common Morpho
Morpho peleides
To 5 in. (13 cm)



Giant Swallowtail
Heraclides cresphontes
To 6 in. (15 cm)



Orange-banded Sulphur
Phoebis philea
To 3 in. (8 cm)



Zebra Longwing
Heliconius spp.
To 3.5 in. (9 cm)



Owl Butterfly
Caligo spp.
To 6 in. (15 cm)
Underside of wings feature 'eye' spots that are intended to distract predators.

Underwings

AMPHIBIANS



Red-eyed Leaf Frog
Agalychnis callidryas
To 3 in. (8 cm)
Note enlarged toe pads. One of 39 species of Costa Rican Treefrog.



Marine Toad
Bufo marinus
To 10 in. (25 cm)
Huge toad is capable of squirting poison at aggressors.



Granular Poison-arrow Frog
Dendrobates granulosus
To 1.5 in. (3.5 cm)
The similar strawberry poison-dart frog has black-flecked skin and dark legs.

Most illustrations show the adult male in breeding coloration. Colors and markings may be duller or absent during different seasons. The measurements denote the average maximum length of most animals from nose/bill to tail tip. Illustrations are not to scale.

Waterford Press produces simplified reference guides that introduce novices to travel, languages, science and nature. Product information and hundreds of free educational games are featured on the website:

www.waterfordpress.com

By James Kavanagh. Illustrated by Raymond Leung. Text and illustrations copyright © 2000 by Waterford Press, Inc. All rights reserved. To order, call 800-434-2555.

For permissions, or to share comments, e-mail: editor@waterfordpress.com. For information on custom-published products, call 800-434-2555 or e-mail info@waterfordpress.com. Printed in Hong Kong



081909



COSTA RICA WILDLIFE – AN INTRODUCTION TO FAMILIAR SPECIES

KAVANAGH/LEUNG

COSTA RICA WILDLIFE

AN INTRODUCTION TO FAMILIAR SPECIES



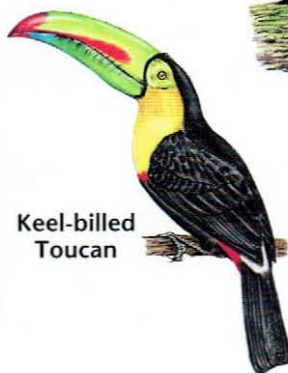
Common Morpho



Resplendent Quetzal



White-faced Capuchin



Keel-billed Toucan

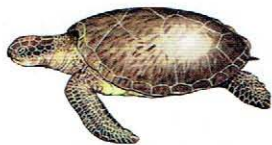


Granular Poison-arrow Frog



WATERFORD PRESS

REPTILES



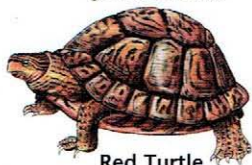
Green Sea Turtle

Chelonia mydas To 5 ft. (1.5 m)
Heart-shaped shell is brown, gray, greenish or black.



Leatherback

Dermochelys coriacea
To 7 ft. (2.1 m)

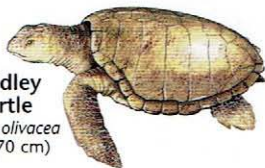


Red Turtle

Rhinoclemmys pulcherrima
To 9 in. (23 cm)

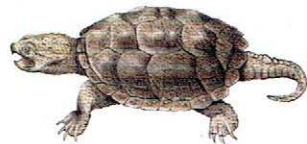
Olive Ridley Sea Turtle

Lepidochelys olivacea
To 28 in. (70 cm)



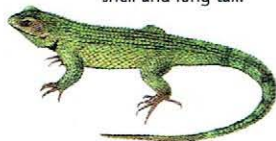
Central American Smooth Gecko

Thecadactylus rapicauda
To 5 in. (13 cm)



Snapping Turtle

Chelydra serpentina To 18 in. (45 cm)
Note large head, knobby shell and long tail.



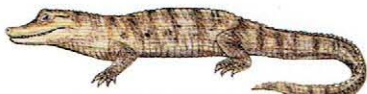
Green Spiny Lizard

Sceloporus malachiticus
To 4 in. (10 cm)



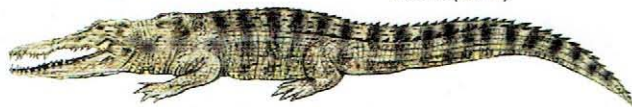
Litter Skink

Sphenomorphus cherriei
To 2.5 in. (6 cm)



Spectacled Caiman

Caiman crocodilus
To 9 ft. (2.7 m)



American Crocodile

Crocodylus acutus To 15 ft. (4.5 m)
Endangered species is found in coastal lowlands.



Eyelash Viper

Bothriechis schlegelii To 30 in. (75 cm)
Has horn-like scales over each eye. Body is green, orangish, reddish, yellow or brown.



Fer-de-lance

Bothrops asper To 8 ft. (2.4 m)
Deadly venomous snake has a triangular head.



Boa Constrictor

Boa constrictor imperator To 8 ft. (2.4 m)
Thick-bodied snake is brown or grayish with dark blotches.



Yellow-bellied Sea Snake

Pelamis platurus To 40 in. (1 m)
Ocean dweller has a flattened tail.



Coral Snake

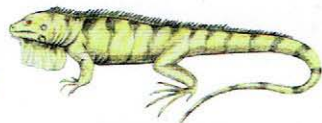
Micrurus spp. To 4 ft. (1.2 m)
Several harmless species mimic this deadly snake. The rhyme to remember is 'Red on yellow can kill a fellow'.

REPTILES



Ctenosaurus

Ctenosaura similis To 20 in. (50 cm)
Also called black iguana.



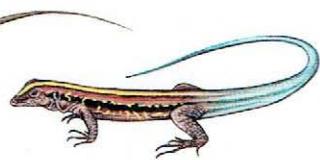
Green Iguana

Iguana verde To 40 in. (1 m)
Greenish to bronze lizard has dark bands on its body.



Basilisk

Basiliscus basiliscus
To 42 in. (1.1 m)
Also called Jesus Christ lizard, it is capable of running across the surface of water.



Central American Whiptail

Ameiva festiva To 5 in. (13 cm)
Young have a bluish tail.

BIRDS



Cormorant

Phalacrocorax spp.
To 26 in. (65 m)

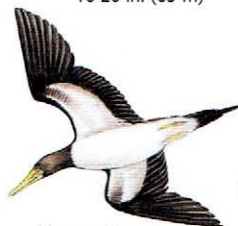
Magnificent Frigatebird

Fregata magnificens
To 40 in. (1 m)
Note huge wingspan and a forked tail.



Brown Pelican

Pelecanus occidentalis
To 50 in. (1.3 m)



Black-crowned Night-Heron

Nycticorax nycticorax
To 28 in. (70 cm)

Brown Booby

Sula leucogaster
To 30 in. (75 cm)



Roseate Spoonbill

Ajaja ajaja
To 32 in. (80 cm)
Bill is flattened at the tip.



Anhinga

Anhinga anhinga
To 3 ft. (90 cm)



Wood Stork

Mycteria americana
To 4 ft. (1.2 m)
Dark head is naked.

BIRDS



Green Heron
Butorides virescens
To 22 in. (55 cm)



Great Egret
Ardea alba
To 38 in. (95 cm)
Note yellow bill and black feet.



White Ibis
Eudocimus albus
To 28 in. (70 cm)



Tricolored Heron
Egretta tricolor
To 26 in. (65 cm)
Note white belly.



Little Blue Heron
Egretta caerulea
To 2 ft. (60 cm)
Note maroon neck.

Snowy Egret
Egretta thula
To 26 in. (65 cm)
Note black bill and yellow feet.



Cattle Egret
Bubulcus ibis
To 20 in. (50 cm)



Purple Gallinule
Porphyrula martinica
To 13 in. (33 cm)



Black-bellied Whistling-Duck
Dendrocygna autumnalis
To 21 in. (53 cm)



Gray-necked Wood-rail
Aramides cajanae
To 16 in. (40 cm)



Muscovy Duck
Cairina moschata
To 32 in. (80 cm)
May be black or white. Males have 'warty' faces.

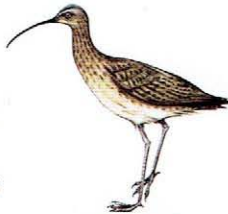


American Oystercatcher
Haematopus palliatus
To 20 in. (50 cm)



Sanderling
Calidris alba To 8 in. (20 cm)
Runs in and out with waves along shorelines.

Northern Jacana
Jacana spinosa
To 10 in. (25 cm)
Long-toed swamp bird walks on the floating leaves of waterplants.



Whimbrel
Numenius phaeopus
To 20 in. (50 cm)

BIRDS



Laughing Gull
Larus atricilla
To 18 in. (45 cm)
Note black head. Trailing edge of wings is white.



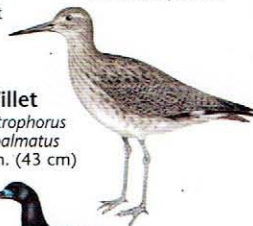
Royal Tern
Sterna maxima
To 22 in. (55 cm)
Orange bill and black head crest are key field marks.



Spotted Sandpiper
Actitis macularia
To 8 in. (20 cm)
Breast is spotted.



Willet
Catoptrophorus semipalmatus
To 17 in. (43 cm)



Black Guan
Chamaepetes unicolor
To 2 ft. (60 cm)



Crested Guan
Penelope purpurascens
To 3 ft. (90 cm)



Great Curassow
Crax rubra
To 3 ft. (90 cm)
The female is brownish with a black crested head.

Gray-headed Chachalaca
Ortalis cinereiceps
To 22 in. (55 cm)



White-collared Swift
Streptoprocne zonaris
To 8 in. (20 cm)
Note white neck ring.



Chimney Swift
Chaetura pelagica
To 6 in. (15 cm)
Appears to beat wings alternately in flight.

Great Tinamou
Tinamus major
To 18 in. (45 cm)
One of several similar species.



Pauraque
Nyctidromus albicollis
To 11 in. (28 cm)
Often sits along roadways at night and is startled by passing vehicles. Note white-edged tail.



Barn Swallow
Hirundo rustica
To 8 in. (20 cm)
Note deeply forked tail.



Southern Rough-winged Swallow
Stelgidopteryx ruficollis
To 6 in. (15 cm)



Blue-and-White Swallow
Notiochelidon cyanooleuca
To 4 in. (10 cm)



Black Vulture
Coragyps atratus
To 27 in. (68 cm)

Turkey Vulture
Cathartes aura
To 32 in. (80 cm)
Note red head.



King Vulture
Sarcoramphus papa
To 32 in. (80 cm)



White Hawk
Leucopternis albicollis
To 23 in. (58 cm)



Broad-winged Hawk
Buteo platypterus
To 19 in. (48 cm)
Note dark and light tail bands.

Laughing Falcon
Herpethotes cachinnans
To 22 in. (55 cm)
Its lunatic, laughing call is a common jungle sound.



Roadside Hawk
Buteo magnirostris
To 16 in. (40 cm)



Osprey
Pandion haliaetus
To 2 ft. (60 cm)
Note white head and dark eye stripe.



Common Black-Hawk
Buteogallus anthracinus
To 22 in. (55 cm)



Swallow-tailed Kite
Elanoides forficatus
To 2 ft. (60 cm)



Spectacled Owl
Pulsatrix perspicillata
To 18 in. (45 cm)



Great Kiskadee
Pitangus sulphuratus
To 9 in. (23 cm)



Lined Woodpecker
Dryocopus lineatus
To 14 in. (35 cm)
The similar pale-billed woodpecker lacks a white facial stripe.



Crested Caracara
Caracara cheriway
To 25 in. (63 cm)
Note red face and black head crest.



Great-tailed Grackle
Quiscalus mexicanus
To 18 in. (45 cm)
Long tail is keel-shaped.



Squirrel Cuckoo
Piaya cayana
To 19 in. (48 cm)



Scarlet Macaw
Ara macao
To 34 in. (85 cm)



Mealy Parrot
Amazona farinosa
To 16 in. (40 cm)
Note bluish crown.



White-crowned Parrot
Pionus senilis
To 10 in. (25 cm)

White-fronted Parrot
Amazona albifrons
To 11 in. (28 cm)



Red-lored Parrot
Amazona autumnalis
To 13 in. (33 cm)



Orange-chinned Parakeet
Brotogeris jugularis
To 7 in. (18 cm)



Brown-hooded Parrot
Pionopsitta haematotis
To 9 in. (23 cm)



Yellow-naped Parrot
Amazona aurocalliata
To 14 in. (35 cm)



Orange-fronted Parakeet
Aratinga canicularis
To 9 in. (23 cm)



Barred Antshrike
Thamnophilus doliiatus
To 6 in. (15 cm)

Groove-billed Ani
Crotophaga sulcirostris
To 13 in. (33 cm)
The similar smooth-billed ani has an ungrooved upper bill.



Little Hermit
Phaethornis longuemareus
To 4 in. (10 cm)
Note downturned bill. One of several similar species of hermit.



Montezuma's Oropendola
Psarocolius montezuma
To 20 in. (50 cm)
The similar chestnut-headed oropendola has a brown head and whitish bill.



Rufous-tailed Hummingbird
Amazilia tzacatl
To 4 in. (10 cm)



Cinnamon Hummingbird
Amazilia rutila
To 4 in. (10 cm)

BIRDS



Turquoise-browed Motmot
Eumomota superciliosa
To 13 in. (33 cm)



Slaty-tailed Trogon
Trogon massena
To 12 in. (30 cm)



Resplendent Quetzal
Pharomachrus mocinno
To 15 in. (38 cm)



Green Kingfisher
Chloroceryle americana
To 8 in. (20 cm)
The similar Amazon kingfisher is larger.



Black-throated Trogon
Trogon rufus
To 9 in. (23 cm)



Belted Kingfisher
Ceryle alcyon
To 14 in. (35 cm)
The similar ringed kingfisher has a rufous belly.



Fiery-billed Aracari
Pteroglossus frantzii
To 17 in. (43 cm)
The similar collared aracari has a yellowish upper bill.



Tropical Gnatcatcher
Polioptila plumbea
To 4 in. (10 cm)



Keel-billed Toucan
Ramphastos sulfuratus
To 19 in. (48 cm)



Chestnut-mandibled Toucan
Ramphastos swainsonii
To 22 in. (55 cm)



Emerald Toucanet
Aulacorhynchus prasinus
To 12 in. (30 cm)



Clay-colored Robin
Turdus grayi
To 10 in. (25 cm)
National bird of Costa Rica.



Masked Tityra
Tityra semifasciata
To 8 in. (20 cm)



Brown Jay
Cyanocorax morio
To 16 in. (40 cm)



Shining Honeycreeper
Cyanerpes lucidus
To 4 in. (10 cm)



Baltimore Oriole
Icterus galbula
To 8 in. (20 cm)

BIRDS



Long-tailed Manakin
Chiroxiphia linearis
To 5 in. (13 cm)



Three-wattled Bellbird
Procnias tricarunculata
To 8 in. (20 cm)
Long dark wattles hang from bill. Call sounds like a hammer clanging on an anvil.



White-throated Magpie-jay
Calocitta formosa
To 18 in. (45 cm)



Golden-browed Chlorophonia
Chlorophonia callophrys
To 5 in. (13 cm)



Yellow-crowned Euphonia
Euphonia luteicapilla
To 4 in. (10 cm)



Azure-hooded Jay
Cyanolyca cucullata
To 11 in. (28 cm)

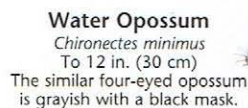
MAMMALS



Common Vampire Bat
Desmodus rotundus
To 4 in. (10 cm)
Feeds on the blood of animals.



Fishing Bulldog Bat
Noctilio leporinus
To 4 in. (10 cm)
Skims over water's surface while foraging for fish.



Water Opossum
Chironectes minimus
To 12 in. (30 cm)
The similar four-eyed opossum is grayish with a black mask.



Common Opossum
Didelphis marsupialis
To 16 in. (40 cm)



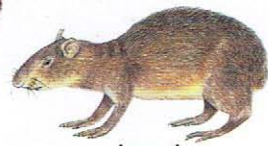
Paca
Agouti paca
To 28 in. (70 cm)



Northern Tamandua
Tamandua mexicana
To 32 in. (80 cm)
Eats primarily ants.



Long-tailed Weasel
Mustela frenata
To 21 in. (53 cm)

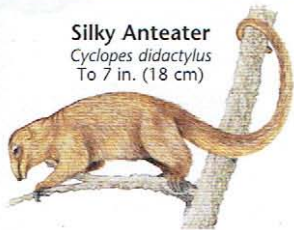


Agouti
Dasyprocta punctata
To 20 in. (50 cm)

MAMMALS

Silky Anteater

Cyclops didactylus
To 7 in. (18 cm)



Nine-banded Armadillo

Dasyus novemcinctus
To 32 in. (80 cm)



Red-tailed Squirrel

Sciurus granatensis
To 10 in. (25 cm)
One of 5 squirrel species.



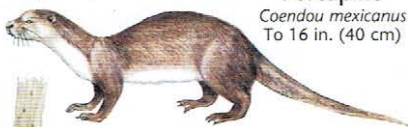
Mexican Hairy Porcupine

Coendou mexicanus
To 16 in. (40 cm)



Striped Hog-nosed Skunk

Conepatus semistriatus
To 20 in. (50 cm)
One of 3 skunk species.



Neotropical Otter

Lontra longicaudis
To 30 in. (75 cm)



Kinkajou

Potos flavus To 22 in. (55 cm)
The similar olingo is smaller and has a bushier tail.



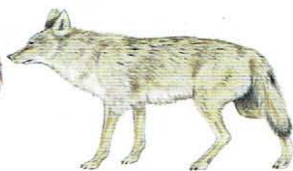
Common Raccoon

Procyon lotor
To 40 in. (1 m)



Tayra

Eira barbara To 28 in. (70 cm)
Large weasel-like mammal.



Coyote

Canis latrans To 52 in. (1.3 m)
Note bushy, black-tipped tail.



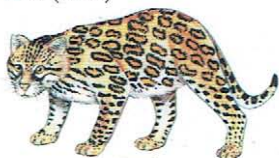
White-nosed Coati

Nasua narica
To 52 in. (1.3 m)



Grison

Galictis vittata
To 22 in. (55 cm)



Ocelot

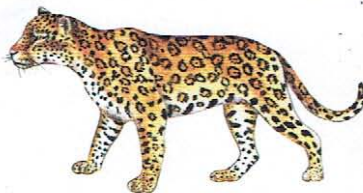
Felis pardalis To 4.5 ft. (1.35 m)
The similar, smaller margay has a tail much longer than the length of its rear leg.



Jaguarundi

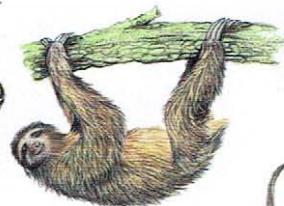
Herpailurus yaguarondi
To 26 in. (65 cm)

MAMMALS



Jaguar

Panthera onca To 8 ft. (2.4 m)
Coat is tan and spotted or all black.
Endangered.



Three-toed Sloth

Bradypus variegatus
To 32 in. (80 cm)



Central American Spider Monkey

Ateles geoffroyi
To 26 in. (65 cm)



Mantled Howler Monkey

Alouatta palliata
To 22 in. (55 cm)



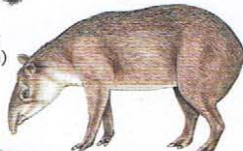
White-faced Capuchin

Cebus capucinus
To 18 in. (45 cm)



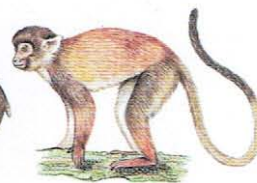
Two-toed Sloth

Choloepus hoffmanni
To 28 in. (70 cm)



Baird's Tapir

Tapirus bairdii
To 6.5 ft. (2 m)
Note long snout.



Red-backed Squirrel Monkey

Saimiri oerstedii
To 12 in. (30 cm)
Note black-tipped tail.



Collared Peccary

Tayassu tajacu To 40 in. (1 m)
The similar white-lipped peccary has a white cheek and throat.



Manatee

Trichechus manatus
To 11.5 ft. (3.5 m)



Red Brocket Deer

Mazama americana
To 56 in. (1.4 m)
Note small horns.



White-tailed Deer

Odocoileus virginianus To 7 ft. (2.1 m)
Tail is held aloft when running.